



Government of India  
Ministry of Earth Sciences



India Meteorological Department

## PRESS RELEASE-2

Time of issue: 1330 hours IST

Dated: 26<sup>th</sup> August, 2024

**Sub: (a) Deep Depression over East Rajasthan and (b) Well Marked Low Pressure Area over Gangetic West Bengal**

### **(a) Deep Depression over East Rajasthan**

Yesterday's depression over northwest Madhya Pradesh and neighbourhood intensified into a Deep Depression over East Rajasthan and adjoining West Madhya Pradesh in the midnight (2330 hours IST) of yesterday, the 25<sup>th</sup> August, 2024. It moved west-southwestwards and lay centered at 0830 hours IST of today, the 26<sup>th</sup> August over East Rajasthan near latitude 24.1°N and longitude 74.0°E, about 60 km south-southeast of Udaipur (East Rajasthan), 180 km east of Deesa (Gujarat) and 180 km northeast of Ahmedabad (Gujarat).

It is likely to continue to move slowly west-southwestwards across south Rajasthan and Gujarat region and reach Saurashtra & Kutch and adjoining areas of Pakistan and northeast Arabian Sea by morning of 29<sup>th</sup> August.

### **(b) Well Marked Low Pressure Area over Gangetic West Bengal**

Yesterday's low pressure area over south Bangladesh and neighbourhood became a Well Marked Low Pressure Area over Gangetic West Bengal in the early morning (0530 hours IST) and lay over the same region in the morning (0830 hours IST) of today, the 26<sup>th</sup> August 2024.

It is likely to move west-northwestwards across Gangetic West Bengal, Jharkhand and adjoining north Odisha during next 2 days.

### **Warnings:**

#### **(i) Rainfall Warning:**

**East & West Madhya Pradesh:** Light to moderate rainfall at most places with heavy to very heavy rainfall at a few places very likely on 26<sup>th</sup> August.

**East & West Rajasthan:** Light to moderate rainfall at most places with heavy to very heavy rainfall at a few places and extremely heavy rainfall at isolated places is likely on 26<sup>th</sup> August. Light to moderate rainfall at most places with heavy to very heavy rainfall at isolated places is likely on 27<sup>th</sup> August.

**Gujarat region:** Light to moderate rainfall at most places with heavy to very heavy rainfall at a few places and isolated extremely heavy rainfall likely on 26<sup>th</sup> and 27<sup>th</sup> August and heavy rainfall at isolated places on 28<sup>th</sup> August.

**Contact:** Cyclone Warning Division, Office of the Director General of Meteorology, India Meteorological Department, Ministry of Earth Sciences, E-mail: cyclonewarningdivision@gmail.com, Website: [rsmcnewdelhi.imd.gov.in](http://rsmcnewdelhi.imd.gov.in). **Spatial rainfall distribution:** Isolated: <25%, A few: 26-50%, Many: 51-75%, Most: 76-100%, **Rainfall amount (mm):** Heavy rain: 64.5 – 115.5, Very heavy rain: 115.6 – 204.4, Extremely heavy rain: 204.5 or more.

**Saurashtra & Kutch:** Light to moderate rainfall at most places with heavy to very heavy rainfall at a few places and extremely heavy rainfall at isolated places is likely on 26<sup>th</sup> and 27<sup>th</sup> August; heavy to very heavy rainfall at isolated places is likely on 28<sup>th</sup> & 29<sup>th</sup> August and heavy rainfall at isolated places on 30<sup>th</sup> August.

**Konkan & Goa:** Light to moderate rainfall at most places with heavy to very heavy rainfall at a few places is likely on 26<sup>th</sup> and heavy rainfall on 27<sup>th</sup> & 28<sup>th</sup> August.

**Madhya Maharashtra:** Light to moderate rainfall at most places with heavy to very heavy rainfall at a few places is likely on 26<sup>th</sup> and heavy rainfall at isolated places is likely on 27<sup>th</sup> & 28<sup>th</sup> August.

**Odisha:** Light to moderate rainfall at most places with heavy rainfall at isolated places is likely during 26<sup>th</sup> to 28<sup>th</sup> August.

**Gangetic West Bengal:** Light to moderate rainfall at most places with heavy to very heavy rainfall at isolated places is likely on 26<sup>th</sup> August and heavy rainfall at isolated places is likely on 27<sup>th</sup> August.

**Jharkhand:** Light to moderate rainfall at many places with heavy to very heavy rainfall at isolated places is likely on 26<sup>th</sup> August and heavy rainfall at isolated places is likely on 27<sup>th</sup> & 28<sup>th</sup> August.

**Bihar:** Light to moderate rainfall at many places with heavy rainfall at isolated places is likely during 26<sup>th</sup> to 28<sup>th</sup> August.

**(ii) Wind warning:**

- Strong surface wind speed reaching 30-40 kmph gusting to 50 kmph is very likely to prevail over Madhya Pradesh on 26<sup>th</sup> August.
- Strong surface wind speed reaching 40-50 kmph gusting to 60 kmph is very likely to prevail over South Rajasthan on 26<sup>th</sup> and 27<sup>th</sup> August.
- Strong surface wind speed reaching 40-50 kmph gusting to 60 kmph is very likely over Gujarat state, along and off Gujarat & adjoining Pakistan and north Maharashtra coasts and northeast Arabian Sea during 26<sup>th</sup> - 28<sup>th</sup> August.
- Squally wind speed reaching 55-65 kmph gusting to 75 kmph is likely to prevail along & off Gujarat & adjoining Pakistan coasts and northeast and adjoining eastcentral Arabian Sea on 29<sup>th</sup> and 30<sup>th</sup> August. Squally wind speed reaching 40-50 kmph gusting to 60 kmph would prevail over interior districts of Gujarat state on 29<sup>th</sup> August.
- Squally wind speed reaching 40-50 kmph gusting to 60 kmph is likely to prevail along and off north Maharashtra coasts on 28<sup>th</sup> & 29<sup>th</sup> August.

**(iii) Sea condition:**

- Squally weather with Rough to very Rough sea conditions is very likely to prevail along & off Gujarat & adjoining Pakistan and north Maharashtra Coasts and Northeast & adjoining Eastcentral Arabian Sea till 30<sup>th</sup> August.
- Squally weather with Rough Sea condition is very likely to prevail over North Bay of Bengal and along & off North Odisha, West Bengal, Bangladesh coasts on 26<sup>th</sup> August.

**Contact: Cyclone Warning Division, Office of the Director General of Meteorology, India Meteorological Department, Ministry of Earth Sciences, E-mail: cyclonewarningdivision@gmail.com, Website: [rsmcnewdelhi.imd.gov.in](http://rsmcnewdelhi.imd.gov.in). Spatial rainfall distribution: Isolated: <25%, A few: 26-50%, Many: 51-75%, Most: 76-100%, Rainfall amount (mm): Heavy rain: 64.5 – 115.5, Very heavy rain: 115.6 – 204.4, Extremely heavy rain: 204.5 or more.**

#### **(iv) Fisherman warning:**

- Fishermen are advised not venture into Northeast & adjoining Eastcentral Arabian Sea and along & off Gujarat & adjoining Pakistan and north Maharashtra Coasts till 30<sup>th</sup> August.
- Fishermen are advised not to venture into North Bay of Bengal and along & off North Odisha, West Bengal, Bangladesh coasts on 26<sup>th</sup> August.

#### **(v) Advisory for offshore/onshore Exploration and Production (E & P) Operators:**

The small ships and offshore -onshore E & P operators, shipping and port authorities along & off Gujarat & north Maharashtra Coasts and Northeast & adjoining Eastcentral Arabian Sea are advised to keep watch on developing weather and take necessary actions.

#### **(vi) Impact Expected**

- Localized Flooding of roads, water logging in low lying areas and closure of underpasses mainly in urban areas of the above region.
- Occasional reduction in visibility due to heavy rainfall.
- Reduction of visibility over sea area due to sea spray induced by strong wind and heavy rainfall.
- Disruption of traffic in major cities due to water logging in roads leading to increased travel time.
- Minor damage to kutcha roads.
- Possibilities of damage to vulnerable structure.
- Localized Landslides/Mudslides/landslips/mud slips/land sinks/mud sinks.
- Damage to horticulture and standing crops in some areas due to inundation.
- It may lead to riverine flooding in some river catchments (for riverine flooding please visit Web page of CWC)

#### **(v) Action Suggested**

- Fishermen are advised not to venture into Northeast & adjoining Eastcentral Arabian Sea and along & off Gujarat & adjoining Pakistan and north Maharashtra Coasts till 30<sup>th</sup> August.
- Fishermen are advised not to venture into North Bay of Bengal and along & off North Odisha, West Bengal, Bangladesh coasts on 26<sup>th</sup> August.
- Judicious regulation of offshore/onshore Operations
- Judicious regulation of surface transports including railways and roadways.
- Check for traffic congestion on your route before leaving for your destination.
- Follow any traffic advisories that are issued in this regard.
- Avoid going to areas that face the water logging problems often.
- Avoid staying in vulnerable structure.

**(vi) Agromet advisories for Heavy** Rainfall likely over various Madhya Pradesh, South Rajasthan, Gujarat State and North Maharashtra

**Contact:** Cyclone Warning Division, Office of the Director General of Meteorology, India  
**Meteorological Department, Ministry of Earth Sciences, E-mail:** cyclonewarningdivision@gmail.com,  
**Website:** [rsmcnewdelhi.imd.gov.in](http://rsmcnewdelhi.imd.gov.in). **Spatial rainfall distribution:** Isolated: <25%, A few: 26-50%, Many: 51-75%, Most: 76-100%, **Rainfall amount (mm):** Heavy rain: 64.5 – 115.5, Very heavy rain: 115.6 – 204.4, Extremely heavy rain: 204.5 or more.

- Make provision for draining out excess water from crop fields to avoid water stagnation in Madhya Pradesh, South Rajasthan, Gujarat State and North Maharashtra.
- Provide mechanical support to horticultural crops and staking to vegetables.

Significant Rainfall (in cm) recorded during past 24 hours till 0830 hours IST of today, the 26.08.2024 is placed at Annexure-1.

All associated graphics have been kept in Annexure-1. The 24 hours accumulated realised rainfall ( $\geq 7$  cm) ending at 0830 hours IST of 26<sup>th</sup> August is kept in Annexure-2.

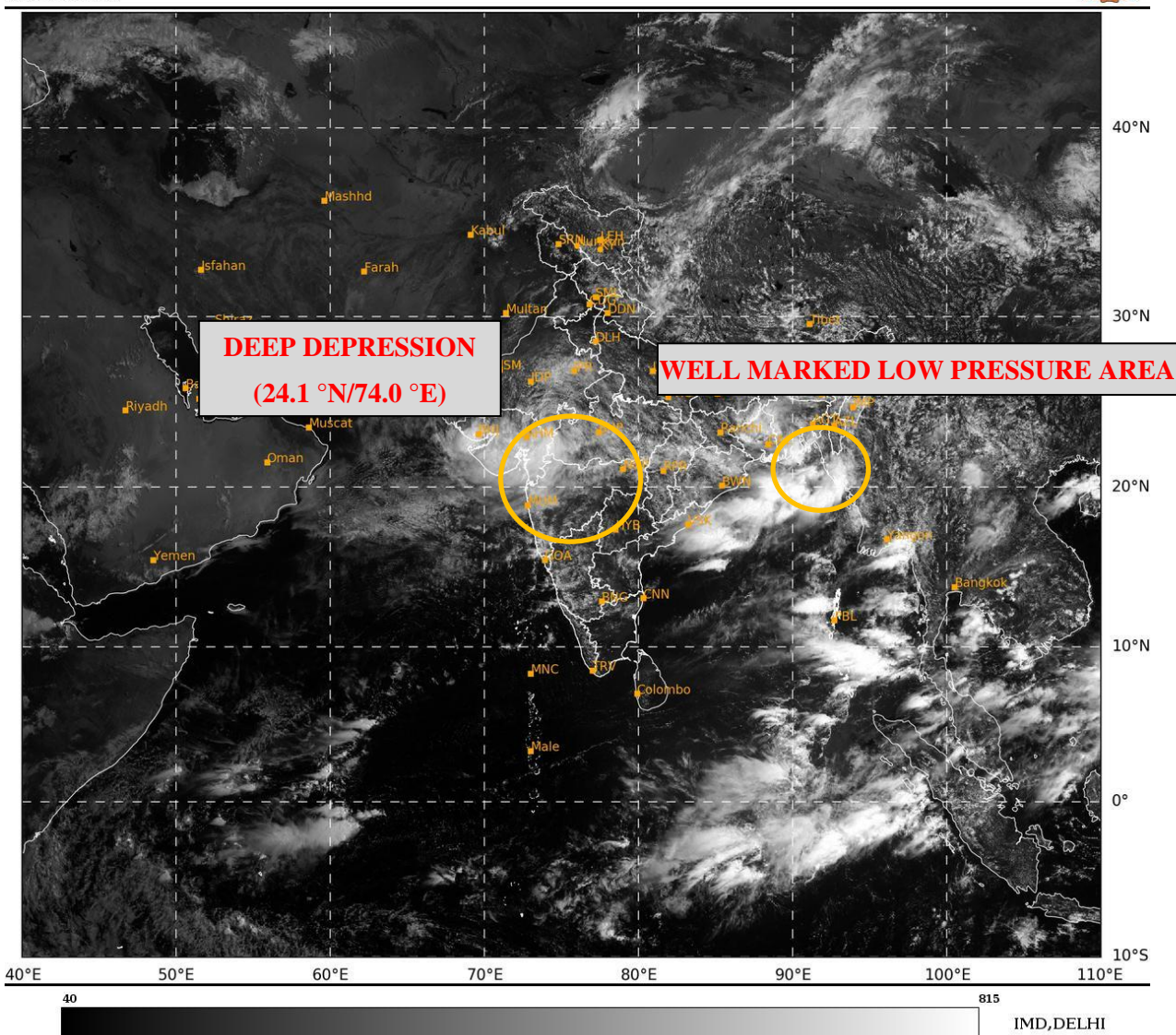
**Next Press Release will be issued at 1230 hours IST of tomorrow, the 27<sup>th</sup> August, 2024.**

Contact: Cyclone Warning Division, Office of the Director General of Meteorology, India Meteorological Department, Ministry of Earth Sciences, E-mail: [cyclonewarningdivision@gmail.com](mailto:cyclonewarningdivision@gmail.com), Website: [rsmcnewdelhi.imd.gov.in](http://rsmcnewdelhi.imd.gov.in). Spatial rainfall distribution: Isolated: <25%, A few: 26-50%, Many: 51-75%, Most: 76-100%, Rainfall amount (mm): Heavy rain: 64.5 – 115.5, Very heavy rain: 115.6 – 204.4, Extremely heavy rain: 204.5 or more.

## Annexure - I

SAT : INSAT-3DR IMG  
Visible Count 0.65 um  
LIC Mercator

26-08-2024/(0445 to 0512) GMT  
26-08-2024/(1015 to 1042) IST

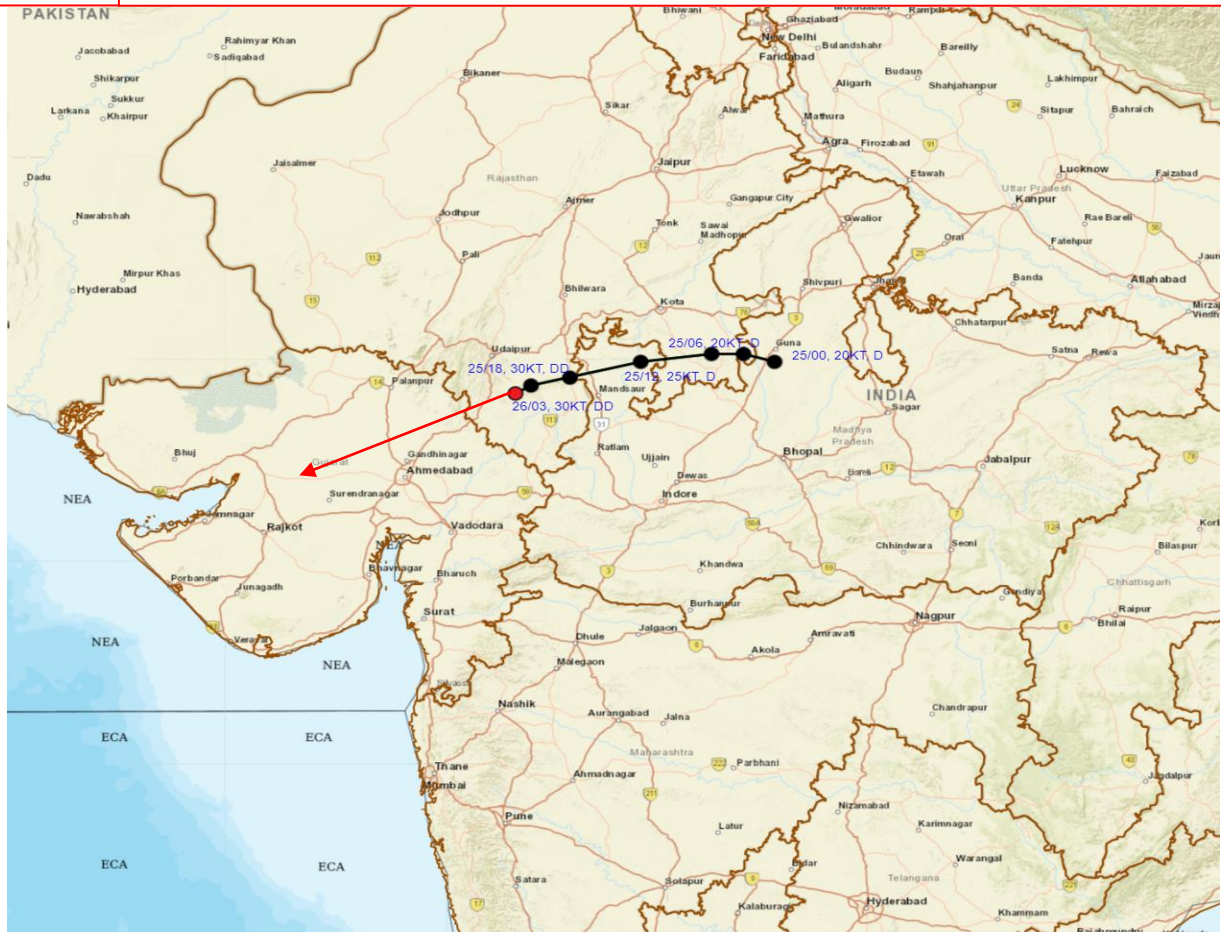


Contact: Cyclone Warning Division, Office of the Director General of Meteorology, India Meteorological Department, Ministry of Earth Sciences, E-mail: cyclonewarningdivision@gmail.com, Website: [rsmcnewdelhi.imd.gov.in](http://rsmcnewdelhi.imd.gov.in). Spatial rainfall distribution: Isolated: <25%, A few: 26-50%, Many: 51-75%, Most: 76-100%, Rainfall amount (mm): Heavy rain: 64.5 – 115.5, Very heavy rain: 115.6 – 204.4, Extremely heavy rain: 204.5 or more.





## OBSERVED AND FORECAST TRACK OF DEEP DEPRESSION OVER EAST RAJASTHAN BASED ON 0300 UTC (0830 IST) OF 26<sup>TH</sup> AUGUST, 2024.

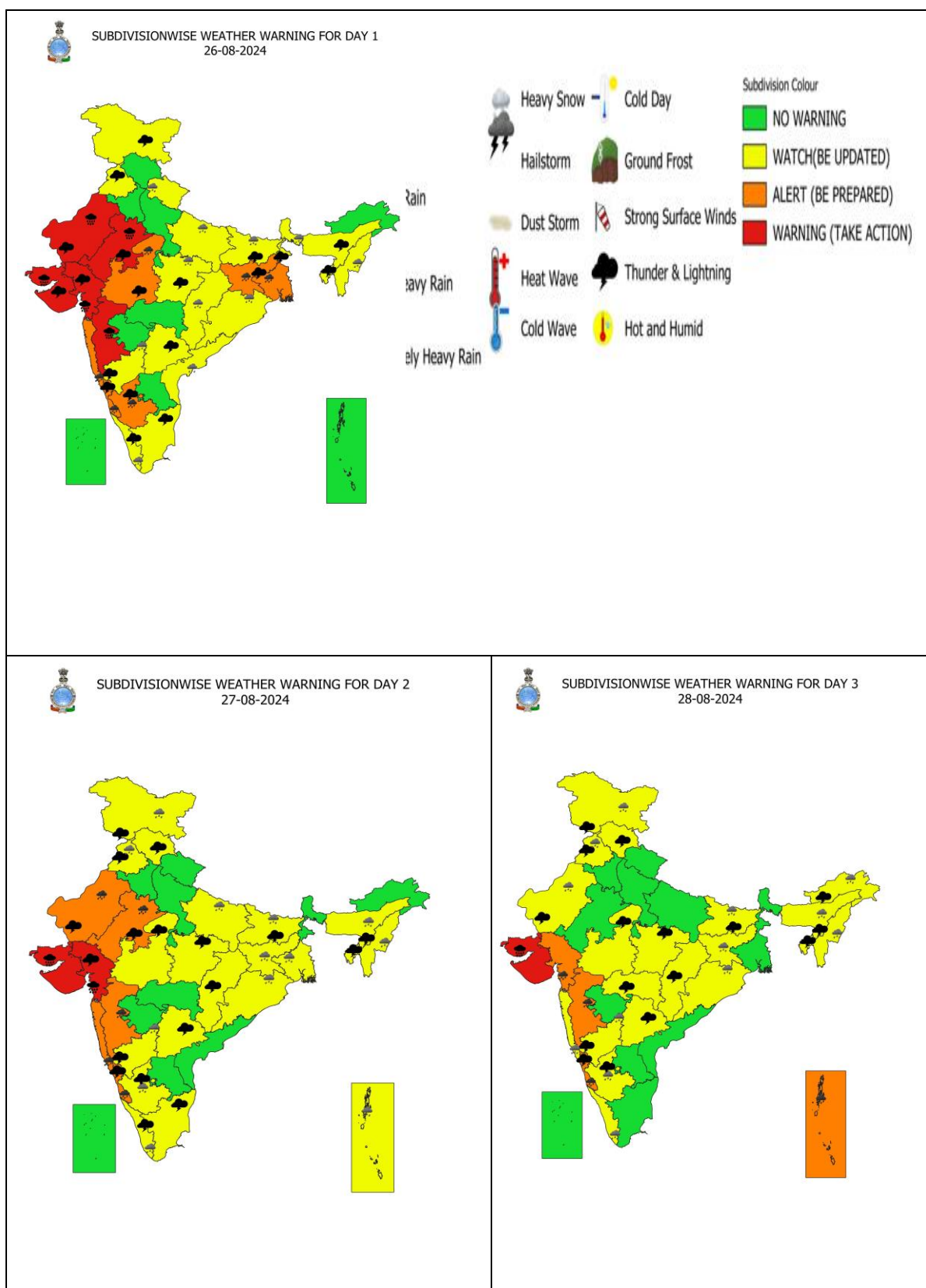


**DATE/TIME IN UTC**  
**IST=UTC + 0530**  
**L: LOW PRESSURE AREA**  
**WML: WELL MARKED LOW PRESSURE AREA**  
**D: DEPRESSION (17-27 KT)**  
**DD: DEEP DEPRESSION (28-33 KT)**  
**CS: CYCLONIC STORM (34-47 KT)**  
**SCS: SEVERE CYCLONIC STORM (48-63KT)**  
**VSCS: VERY SEVERE CYCLONIC STORM (64-89 KT)**  
**ESCS: EXTREMELY SEVERE CYCLONIC STORM (90-119 KT)**  
**SuCS: SUPER CYCLONIC STORM (≥ 120 KT)**

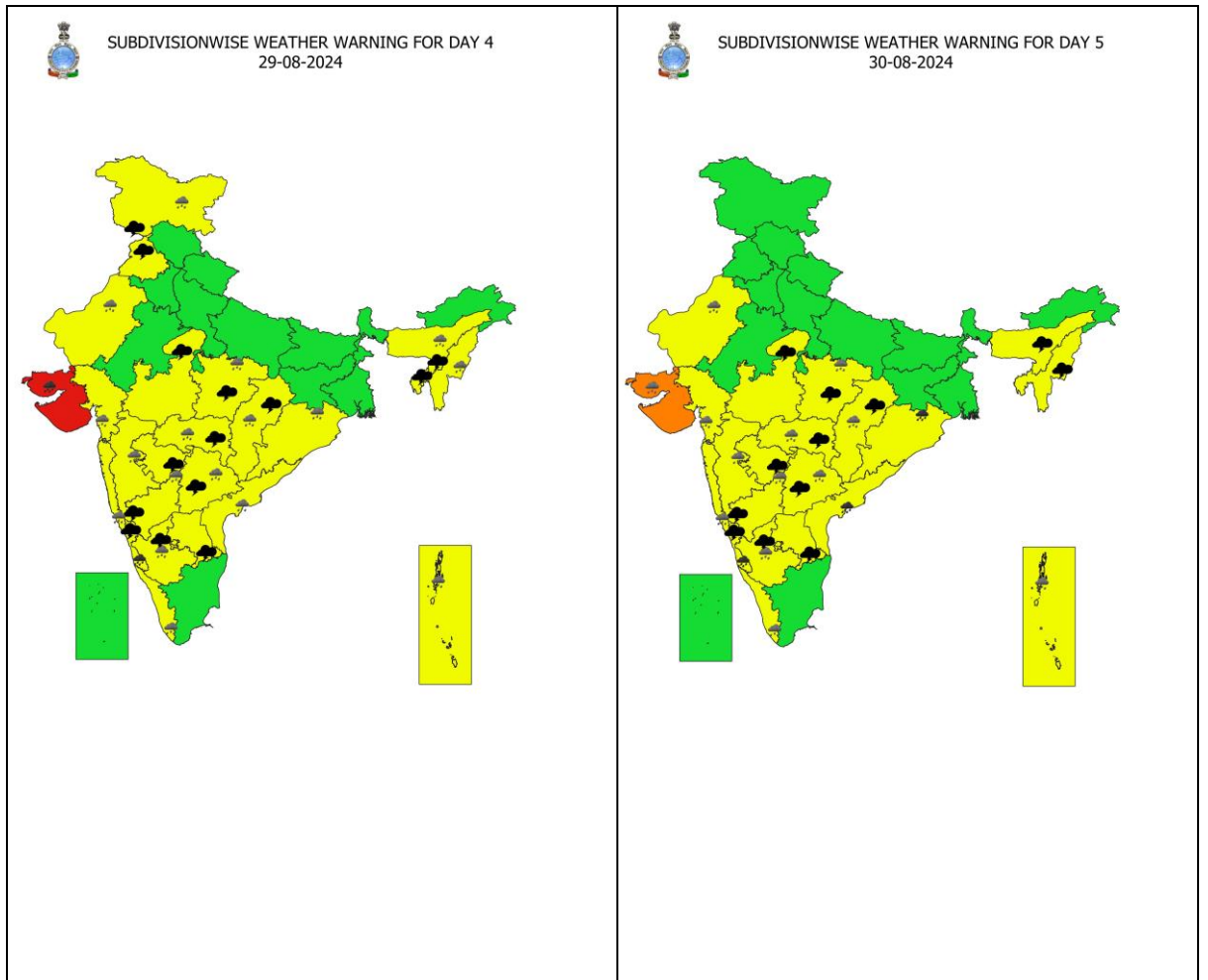
- LESS THAN 34 KT**
- 34-47 KT**
- ≥ 48 KT**
- OBSERVED TRACK**
- FORECAST TRACK**
- CONE OF UNCERTAINTY**

**Contact: Cyclone Warning Division, Office of the Director General of Meteorology, India**  
**Meteorological Department, Ministry of Earth Sciences, E-mail: cyclonewarningdivision@gmail.com,**  
**Website: [rsmcnewdelhi.imd.gov.in](http://rsmcnewdelhi.imd.gov.in). Spatial rainfall distribution: Isolated: <25%, A few: 26-50%, Many:**  
**51-75%, Most: 76-100%, Rainfall amount (mm): Heavy rain: 64.5 – 115.5, Very heavy rain: 115.6 –**  
**204.4, Extremely heavy rain: 204.5 or more.**

## Weather Warning Graphics

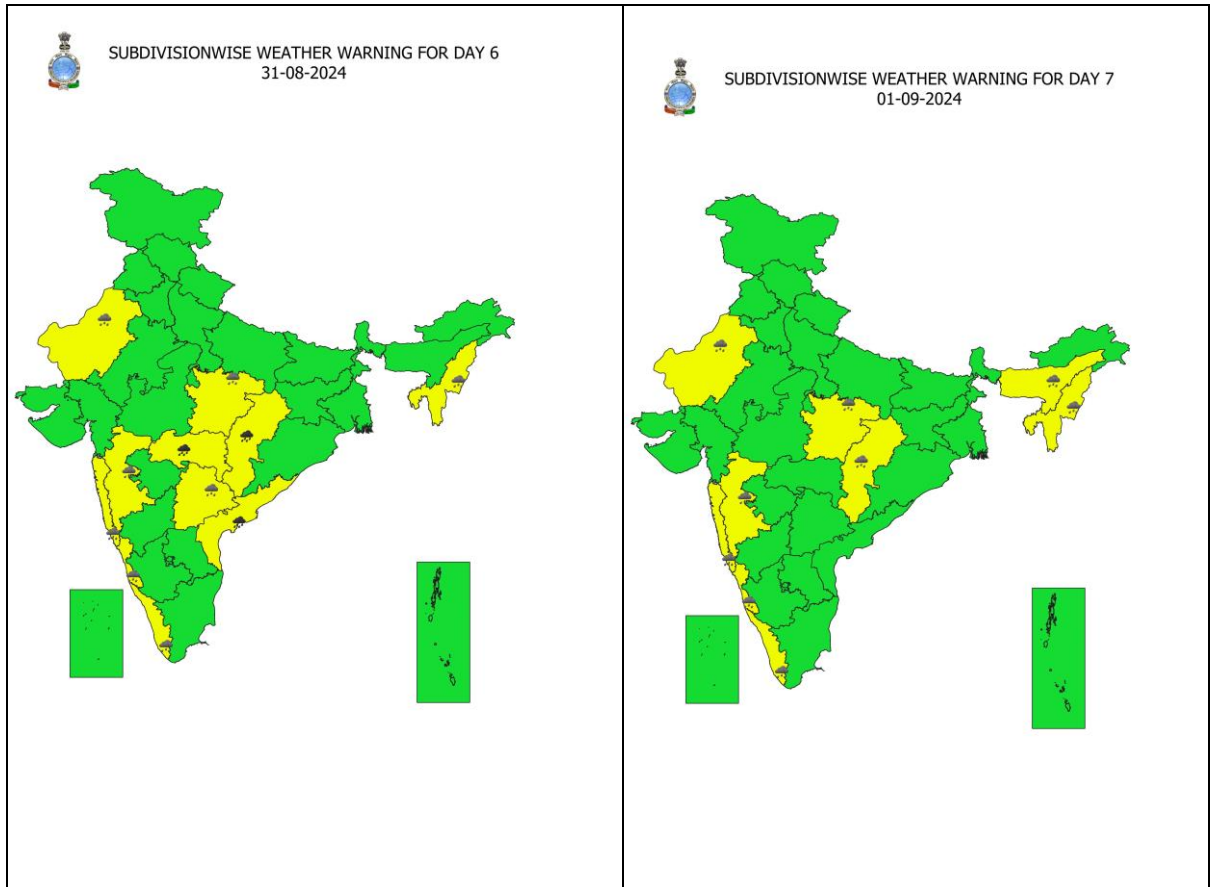


**Contact: Cyclone Warning Division, Office of the Director General of Meteorology, India Meteorological Department, Ministry of Earth Sciences, E-mail: cyclonewarningdivision@gmail.com, Website: [rsmcnewdelhi.imd.gov.in](http://rsmcnewdelhi.imd.gov.in). Spatial rainfall distribution: Isolated: <25%, A few: 26-50%, Many: 51-75%, Most: 76-100%, Rainfall amount (mm): Heavy rain: 64.5 – 115.5, Very heavy rain: 115.6 – 204.4, Extremely heavy rain: 204.5 or more.**



**Contact:** Cyclone Warning Division, Office of the Director General of Meteorology, India  
**Meteorological Department, Ministry of Earth Sciences, E-mail:** cyclonewarningdivision@gmail.com,  
**Website:** [rsmcnewdelhi.imd.gov.in](http://rsmcnewdelhi.imd.gov.in). **Spatial rainfall distribution:** Isolated: <25%, A few: 26-50%, Many: 51-75%, Most: 76-100%, **Rainfall amount (mm):** Heavy rain: 64.5 – 115.5, Very heavy rain: 115.6 – 204.4, Extremely heavy rain: 204.5 or more.

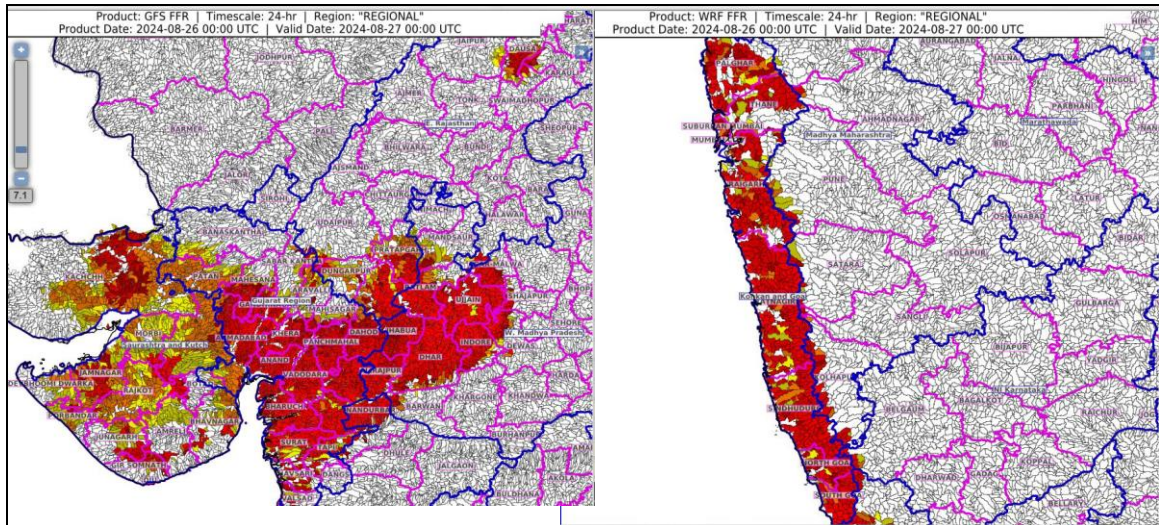







- Action may be taken based on **ORANGE AND RED** COLOUR warnings.
- Vulnerable regions likely urban and hilly areas action may be initiated for heavy rainfall warning.
- As the lead period increases forecast accuracy decreases.

Contact: Cyclone Warning Division, Office of the Director General of Meteorology, India Meteorological Department, Ministry of Earth Sciences, E-mail: cyclonewarningdivision@gmail.com, Website: [rsmcnewdelhi.imd.gov.in](http://rsmcnewdelhi.imd.gov.in). Spatial rainfall distribution: Isolated: <25%, A few: 26-50%, Many: 51-75%, Most: 76-100%, Rainfall amount (mm): Heavy rain: 64.5 – 115.5, Very heavy rain: 115.6 – 204.4, Extremely heavy rain: 204.5 or more.

## Flash Flood Guidance



### Flash Flood Risk

	<b>High Risk (Take Action)</b>
	<b>Moderate Risk (Be Prepared)</b>
	<b>Low Risk (Be Updated)</b>

### 24 hours Outlook for the Flash Flood Risk (FFR) till 0530 IST of 27-08-2024 :

High flash flood risk likely over few watersheds & neighbourhoods of following Met Sub-divisions during next 24 hours.

**East Rajasthan** - Banswara, Dausa, Dungarpur, Karauli, Pratapgarh and Udaipur districts.

**West Madhya Pradesh** - Agar-Malwa, Alirajpur, Barwani, Dhar, Indore, Jhabua, Mandasaur, Ratlam and Ujjain districts.

**Gujarat Region** - Dadar & Nagar Haveli, Daman, Ahmadabad, Anand, Aravalli, Banaskantha, Bharuch, Chhota Udepur, Dahod, Dangs, Gandhinagar, Khera, Mahesana, Mahisagar, Narmada, Navsari, Panchmahal, Patan, Sabar Kantha, Surat, Tapi, Vadodara and Valsad districts.

**Saurashtra & Kutch** - Amreli, Bhavnagar, Botad, Devbhoomi Dwarka, Diu, Gir Somnath, Jamnagar, Junagarh, Porbandar, Rajkot, Surendranagar, Morbi and Kachchh districts. Surface runoff/ Inundation may occur at some fully saturated soils & low-lying areas over AoC as shown in map due to expected rainfall occurrence in next 24 hours.

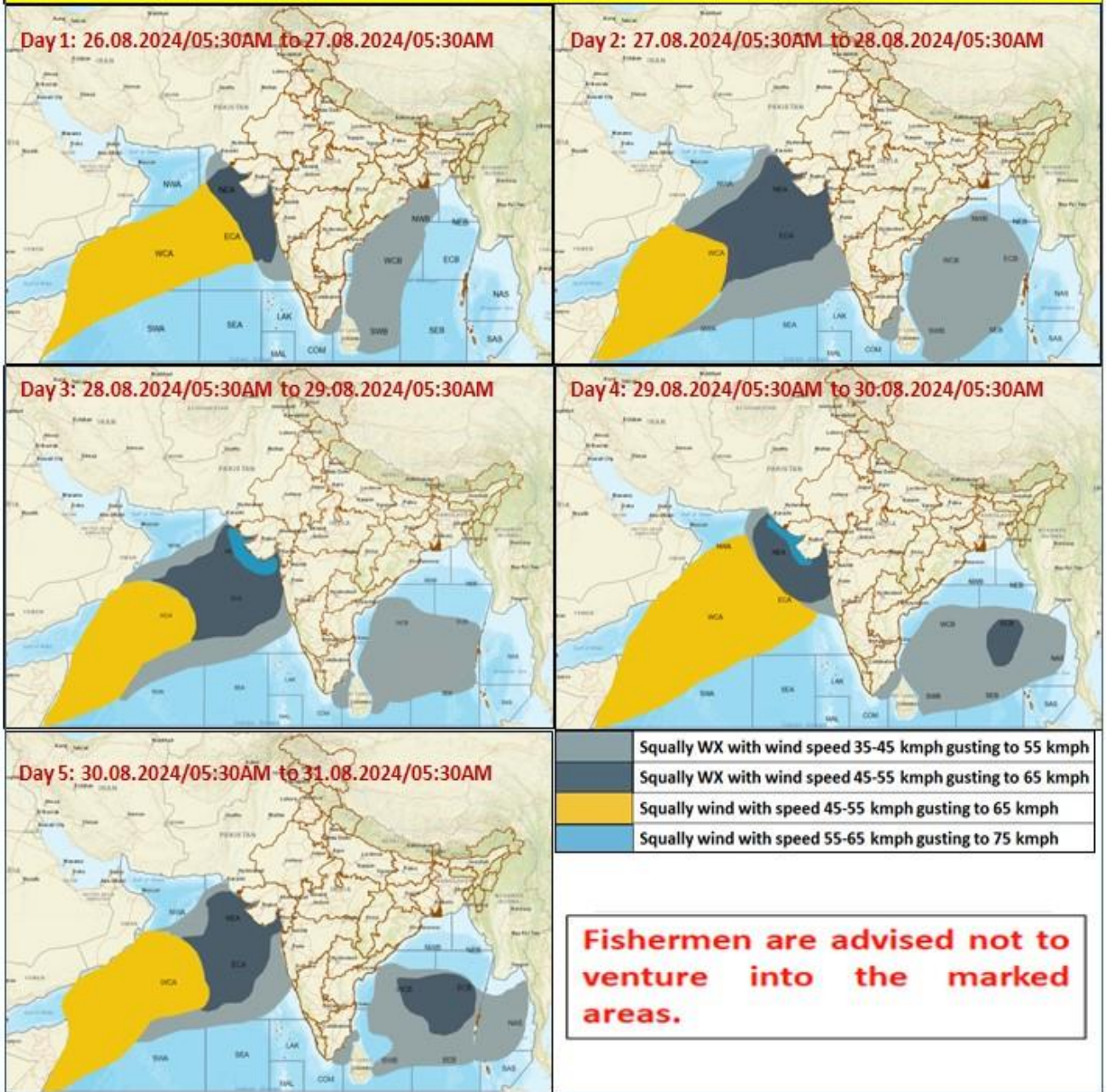
**Konkan & Goa** - North Goa, South Goa, Mumbai City, Palghar, Raigarh, Ratnagiri, Sindhudurg, Suburban Mumbai and Thane districts.

Surface runoff/ Inundation may occur at some fully saturated soils & low-lying areas over Area of Concern (AoC) as shown in map due to expected rainfall occurrence in next 24 hours.

**Contact:** Cyclone Warning Division, Office of the Director General of Meteorology, India  
**Meteorological Department, Ministry of Earth Sciences, E-mail:** cyclonewarningdivision@gmail.com,  
**Website:** [rsmcnewdelhi.imd.gov.in](http://rsmcnewdelhi.imd.gov.in). **Spatial rainfall distribution:** Isolated: <25%, A few: 26-50%, Many: 51-75%, Most: 76-100%, **Rainfall amount (mm):** Heavy rain: 64.5 – 115.5, Very heavy rain: 115.6 – 204.4, Extremely heavy rain: 204.5 or more.



## Fishermen Warning Graphics



Contact: Cyclone Warning Division, Office of the Director General of Meteorology, India Meteorological Department, Ministry of Earth Sciences, E-mail: [cyclonewarningdivision@gmail.com](mailto:cyclonewarningdivision@gmail.com), Website: [rsmcnewdelhi.imd.gov.in](http://rsmcnewdelhi.imd.gov.in). Spatial rainfall distribution: Isolated: <25%, A few: 26-50%, Many: 51-75%, Most: 76-100%, Rainfall amount (mm): Heavy rain: 64.5 – 115.5, Very heavy rain: 115.6 – 204.4, Extremely heavy rain: 204.5 or more.

**Significant Rainfall recorded during past 24 hours till 0830 hours IST of today 26.08.2024 (in cm):**

- ❖ **Gujarat Region:**Khergam (Navsari) 35, Dangs (ahwa) (Dangs) 29, Waghai (Dangs) 26,Dang (Dangs) 24, Kaprada (Valsad) 23, Santrampur (Mahisagar) 23,Dharampur (Valsad) 23, Subir (Dangs) 22, Shahera (Panchmahal) 21, Ukai (Surat)20, Vansda (Navsari) 20, Madhbun (Dadara& Nagar Haveli) 20, Nadiad (Kheda) 19,Valsad Kvk (Valsad) 18, Nandod (Narmada) 18, Dediapada (Narmada) 18,Fatepura (Dahod) 17, Kukarmunda (Tapi) 17, Khanvel (Dadara& Nagar Haveli) 17,Mahudha (Kheda) 17, Sagbara (Narmada) 16, Kadana (Mahisagar) 16, Anand (distAnand) 16, Karjan (Vadodara) 16, Quant (Chhota Udepur) 15, Dahod (Dahod) 15,Narmada (Narmada) 15, Silvassa (Dadara& Nagar Haveli) 15, Modasa (distAravalli) 14,
- ❖ **East Rajasthan:** Pipalkhunt(Pratapgarh) 26, Bhungra(Banswara) 19, Banswara(distBanswara) 19, Sallopat(Banswara) 16, Bagidora(Banswara) 15, Arthuna (distBanswara) 15, Garhi (Banswara) 15, Sajjangarh(Banswara) 15, Pratapgarh (distPratapgarh) 13, Kesarpura(Banswara) 13, Chikali(Dungarpur) 13, Danpur (distBanswara) 13, Loharia (Banswara) 11, Shergarh(Banswara) 11, Arnod(distPratapgarh) 11, Sabla(Dungarpur) 10,
- ❖ **Saurashtra & Kutch:** Rajkot (Rajkot) 23, Muli (Surendranagar) 21, Chotila (Surendranagar) 21,Wankaner (Morbi) 20, Halvad (Morbi) 18, Paddhari (Rajkot) 17, Thangadh (Surendranagar) 14, Surendranagar (Surendranagar) 14, Wadhvan (Surendranagar) 13,Surendranagar (Surendranagar) 11, Dhrangadhra (Surendranagar) 11, Sayla (Surendranagar) 11, Lodhika (Rajkot) 10,
- ❖ **West Madhya Pradesh:** Alirajpur (Alirajpur) 19, Malhargarh (Mandsaur) 15, Pansemal (Barwani) 13, Jaora (Ratlam) 12, Kathiwada (Alirajpur) 12, Raoti (Ratlam) 12, Jawad (Neemuch) 11, Shamshabad (Vidisha) 11, Sailana (Ratlam) 10, Mandsaur- (Mandsaur) 10, Neemuch- (Neemuch) 10,
- ❖ **Madhya Maharashtra:**Surgana (Nashik) 24, Dhadgaon/akrani- Hydro (Nandurbar) 19, Radhanagari (Kolhapur) 16, Peth (Nashik) 16, Mahabaleshwar- Imd Obsy (Satara) 14, Lonavalaagri (Pune) 13, Trimbakshwar (Nashik) 12, Igatpuri (Nashik) 11, Taloda (Nandurbar) 11, Bhor (Pune) 10,
- ❖ **Coastal Karnataka:** Castle Rock (Uttara Kannada) 16, Kadra (UttaraKannada) 8,
- ❖ **Konkan & Goa:**Palgharagri (Palghar) 15, Jawhar (Palghar) 15, Vikramgad (Palghar) 13, Wada (Palghar) 13, Talasari (Palghar) 12, Dahanu (Palghar) 12, Mangaon (Raigad) 11, Kankavli (Sindhudurg) 11, Valpoi (North Goa) 11, Mahad (Raigad) 10, Ponda (North Goa) 10, Mhasla (Raigad) 10, Matheran (Raigad) 10,
- ❖ **South Interior Karnataka:** PonnampetPwd (Kodagu) 14, Kottigehara (Chikkamagaluru) 12,
- ❖ **Jharkhand:** Maheshpur(Pakur)12;
- ❖ **Chhattisgarh:** Sukma (Sukma) 10,
- ❖ **West Rajasthan:**Jaitran (Pali) 7,
- ❖ **Tamil Nadu:**Taluk Office Pandalur (The Nilgiris) 7,
- ❖ **North Interior Karnataka:** Londa (Belagavi) 7,
- ❖ **Coastal Andhra Pradesh:** Chodavaram (Anakapalli) 7

Contact: Cyclone Warning Division, Office of the Director General of Meteorology, India Meteorological Department, Ministry of Earth Sciences, E-mail:cyclonewarningdivision@gmail.com, Website: [rsmcnewdelhi.imd.gov.in](http://rsmcnewdelhi.imd.gov.in), Spatial rainfall distribution: Isolated: <25%, A few: 26-50%, Many: 51-75%, Most: 76-100%, Rainfall amount (mm): Heavy rain: 64.5 – 115.5, Very heavy rain: 115.6 – 204.4, Extremely heavy rain: 204.5 or more.